



Radlett Art Society

<http://www.radlett-art-society.co.uk>

Dear Member,

Welcome to all our valued members. We hope you join us at our excellent lectures and our Sunday visits around Britain.

We celebrate our 50th anniversary this year. Our big preparation is for the **50th Annual Art Exhibition**, including exhibits from two local colleges again, following our Patron's wish to help students in their studies and careers by awards. Our members will also be eligible for awards.

We warmly invite you to join us in a welcome glass of champagne before our Opening Lunch on Saturday 2nd July.

We hope John Aphthorp will say a few words for the occasion, as will our Hon. Past President Ronnie Samuels, and our distinguished judge of the paintings this year, Brian Young ARA.



I thank all helpers in advance, for the tremendous amount of work involved. Please let me know if you can offer any help.

Four key members of the **Committee** are retiring at the end of 2016: **Chairman, Secretary, Treasurer and Lecture Organiser**. Also two other members will resign, feeling they have served long enough.

It is **IMPERATIVE** that we have replacements for these key positions, or else the **SOCIETY WILL CLOSE DOWN**. Please let us know if you can help, we will welcome you at Committee meetings for you to see how things are done.

We hope you will please look at the RAS Painters' Workshop display in the Centre foyer in July while our Exhibition is in the Hall. We will be very pleased to see you at our Exhibition, and wish you all a happy, healthy Summer, full of interest and creative ideas.

Carmen

REMINDER

full details in the previous newsletter.

Thursday 12th May

7.30pm for 8pm

GIACOMETTI

Lecturer: Dr. Margaret Knight

Admission: Members Free

Non-Members £7. Coffee is available

FUTURE LECTURES at the Radlett Centre

Thursday 16th June 7.30pm for 8pm

JOHN PIPER and the

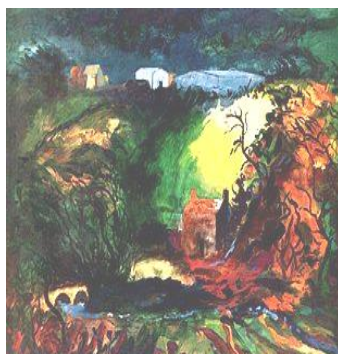
ENGLISH LANDSCAPE TRADITION

Lecturer: *Mary Acton BA (Hons)*

During a long and productive life he was well known as a painter, designer of stained-glass windows, theatre sets and printmaker. His prolific output also included designs for book jackets, screen-prints, fabrics and ceramics. He was an Official War Artist during World War 11.

This lecture will focus on his English landscapes which often include churches and monuments.

Admission: *Members Free Non-Members £7. Coffee is available*



Middle Mill, Pembrokeshire, 1982

Thursday 11th August 7.30pm for 8pm

CARAVAGGIO

Lecturer: *Dr. Colin Bailey BA (Hons) PhD FSA*

Michelangelo Merisi da Caravaggio (1571-1610)



Boy with a Basket of Fruit, 1593-1594.

Admission: *Members Free Non-Members £7. Coffee is available*

PAST LECTURES

Tuesday 8th March *Ann Clements* lectured on **“NO MORE MUGS”**

John Singer Sargent (1876-1925), was known as an important society portraitist, but came to a point in his life when he wished to devote his talent to other genres; hence the above quote. He captured the tone of the Edwardian era of Europe and America, as lived by the rich and famous, but also, as Ann showed us, was capable of wonderful watercolour landscapes. He became an Official War Artist and portrayed the pathos and horror of World War 1, as seen at the Imperial War Museum, in his huge painting, entitled Gassed. Sargent was actually American, but spent his young life travelling around Europe with his parents, then studied art in Florence and Paris. He settled in London, but continued to travel widely, frequently visiting America, so his work is widely spread. Ann gave us a delightful, amusing but informative, talk. She explained clearly how radical he was, although deriving his influences from Velasquez, Hals and others. He knew everybody and his fluid watercolours show his appreciation of the Impressionist.

Muriel Beaver

PAST LECTURES

Thursday 14th April *George Hart* lectured on *PETRA Treasury of the Desert*.

There was a packed house to hear this fascinating lecture and see wonderful slides of the amazing ancient architecture of a city, created thousands of years ago, in an inhospitable landscape of mountains and desert. It was apparently begun in biblical times by the Nabateans, as their capital. Their engineering was extraordinary, for they built an aqueduct, long before Roman times, to supply water to this arid area. They then carved magnificent buildings into the rock faces, Later buildings and alterations were added by Greco-Egyptians and Romans. Petra was on important trading routes, running east/west bringing spices, such as frankincense and myrrh, silks and so on, to the Mediterranean. It was eventually superseded, when the Romans built Palmyra further north. **Muriel Beaver**

FUTURE VISITS

Sunday 26th June **Hardwick Hall, Chesterfield, Derbyshire**

Hardwick Hall is an Elizabethan masterpiece. Built between 1590 and 1597 for the formidable Bess of Hardwick, it was designed by the architect Robert Smythson, an exponent of the Renaissance style of architecture. It contains a large collection of embroideries, mostly dating from the late 16th century, many of which are listed in the 1601 inventory. Some of the needlework on display in the house incorporates Bess's monogram "ES", and may have been worked on by Bess herself. There is also a large amount of fine tapestry and furniture from the 16th and 17th centuries. It contains many portraits, the most notable amongst them is a famous portrait of Queen Elizabeth, probably from the workshop of Nicholas Hilliard that features an amazing dress covered with fantastical sea creatures. Hardwick also has a beautiful garden and parkland to explore. There is a restaurant and shop on the site.

Time: Depart: Radlett Post Office 9:00 am Arrive: Hardwick Hall 12:00 am

Depart: Hardwick Hall 4:00 pm Arrive: Radlett 6:45 pm

Cost: Members (NT) £29.50 Guests (NT) £31.50 Gratuity included

Members (not NT) £42.20 Guests (Not NT) £44.20

Sunday 21st August **Oxburgh Hall, Swaffham, Norfolk.**

Oxburgh Hall is a moated country house. Built around 1482 by Sir Edmund Bedingfeld. It has always been a family home, not a fortress, and they have lived here ever since. It is a fine example of a late medieval, inward-facing great house. Inside see the astonishing needlework by Mary, Queen of Scots and the priest hole. There are a number of open rooms, including the library, saloon and armoury, with many items of furniture, ceramics and a large number of pictures including various Kings and members of the family. There is also a chapel with stained glass windows (some dating from the 14th century). Outside there is a parterre, herbaceous borders and a walled kitchen garden as well as grounds to explore. There is a restaurant and shop on the site.

Time: Depart: Radlett Post Office 9:45 am Arrive: Oxburgh Hall 12:15 am

Depart: Oxburgh Hall 4:00 pm Arrive: Radlett 6:15 pm

Cost: Members (NT) £21.50 Guests (NT) £23.50 Gratuity included

Members (not NT) £29.90 Guests (Not NT) £31.90

Sunday 18th to Tuesday 20th September – Trip to Liverpool and Manchester

There are still some places available on our trip in September which includes visits to the Lady Lever art gallery, L.S Lowry Gallery, IWM north and the two Liverpool cathedrals. The trip includes two nights half board stay at a 4* hotel. Details are on our website or contact Gary Harding (07949 141214).

Sunday 23rd October Museum of London

The Museum of London provides a history of London from prehistoric times to the present day. The nine galleries include Roman London, with exhibits of when the Romans built the city from the first century AD, and Medieval London. War, Plague and Fire, mark the 450 years since the Fire of London, including the expanding City between 1670 and 1850 with more recent times covering the 1850's to the 1940's up to the present day. The galleries include a variety of pictures, films and objects, including the Thomas Heatherwick's London 2012 Cauldron and the Lord Mayor's Coach. You may extend your visit by taking a short walk to the nearby Barbican with its own Art Galleries (admission not included) and other attractions. There is food and drink available both at the Museum and in the Barbican.

Time: Depart: Radlett Post Office 10:30 am Arrive: Museum 11.30 am

Depart: Museum of London 16:30 pm Arrive: Radlett 17:30 pm

Cost: Members £16.50 Guests £18.50 Gratuity included

PAST VISIT to TWO TEMPLE PLACE

The Sunday visit 20th March was to Two Temple Place on the Embankment just south of Holborn Viaduct. The display was called "Beyond Beauty", transforming the body in Ancient Egypt and on display were numerous artefacts from 3000 BC to 400 AD belonging to Ancient Egyptians. These showed their ordinary day-to-day activities. It was a most interesting day.

Raymond Hurt



PAINTERS WORKSHOP

The enjoyable afternoons continue with full membership. Many of us pursue our own ideas in different methods, watercolour, acrylics, oils and pencils. A still-life group is set up each week for those who like to practise and learn. We close in July and the group will go sketching around Radlett. Thanks to all members for their friendly, helpful ways.

Carmen.