



Radlett Art Society

Dear Member

As 2022 draws to a close, I look back with some relief at a year unspoilt by the pandemic which had such a devastating effect on our recent activities.

Many of us greatly enjoyed the holiday in Northumberland - the last to be organized by Gary Harding. Although we remain unable to recruit a successor, there is a possibility that we could take advantage of an organized commercial tour with special arrangements for our members.

We have enjoyed some outstanding lectures this autumn, both at the synagogue and online. Many thanks to Frances for continuing to keep us educated and entertained by the variety of subjects she chooses.

The Thursday workshop continues throughout the winter and some very interesting and accomplished work was exhibited at the Radlett Centre last month. Active or aspiring artists (of any age!) are always welcome.

Members may like to know that next year's summer exhibition will be held at the Village Hall. It is likely that the Radlett Museum, adjacent to the Hall will have a special event on at the same time.

Finally, our Christmas lunch is on December 7th at Porters's Park Golf Club. It is always a most enjoyable occasion and I do hope to see as many members there as possible

Chairman

Adam Lewis



Membership Cards New Design for Calendar and Membership Cards

We have decided to change the format now we no longer have trips to advise you of. The new cards will be folded in 3 as the previous calendar was. However, they will be half the size and will now double as your membership card as well. We hope they will be a good size and shape for your pocket, handbag or wallet.

The information contained in the calendar will also be available on the website and in the newsletters as reminders before the event. If you would like one sent to you, please send an SAE to me: Otherwise they will be available at live lectures and at the Thursday workshop.

Anna Cross tel:01923 856670

2023 RAS ART HISTORY LECTURES AND ART DEMONSTRATIONS

Next year's programme is packed with exciting art history lectures and demonstrations from January through to November. Again the blended program options will be available (subject to lecturer's permission).

This year 5 live sessions at the Radlett and Bushey Synagogue will also be included, from April-September during the spring and summer months.

The Lectures start with the society's long term favourite, Frank Woodgate.

The second Lecture is by Val Woodgate (Frank's wife) also a popular regular with the RAS

The 3rd Zoom session, is an art demonstration on the use of pastels by the lovely Ruby Lewis. Ruby is a bubbly, talented artist who paints in all mediums: this demonstration will be restricted to pastel painting.

FUTURE LECTURES :

Thursday – January 19th – 7.45 for 8pm – via Zoom Meeting

THE SECOND ELIZABETHEN AGE

Lecturer: FRANK WOODGATE

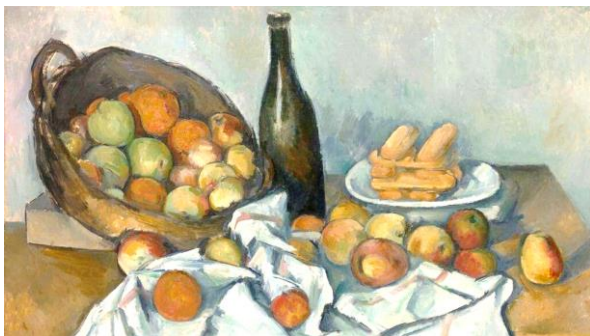
This will include many post-war British artists including Bacon, Freud and Hockney and the next generation of British artists Gormley, Hirst and Emin. Love them or hate them all will acknowledge they have helped to keep British Art at the forefront of the international avant-garde. The image shows the iconic Angel of the North by Gormley – many of you saw this and stood at the foot of the giant sculpture on our last RAS holiday to Newcastle.



Thursday – February 23rd – 7.45 for 8pm – via Zoom Meeting

CEZANNE EXHIBITION

Lecturer: VAL WOODGATE



Her talk will be on the new **Cezanne Exhibition taking place 6th October--12th March 2023 at the Tate Modern**. The exhibition and lecture will cover the career-spanning survey of this pivotal iconic figure of modern art, consistently popular and influential with the public and the art world. The image shown is used for the Tate catalogue.

MARCH DEMONSTRATION

Thursday 23RD March via Zoom

This 3rd Zoom session, is an art demonstration on the use of pastels by the lovely Ruby Lewis.

Ruby is a bubbly, talented artist who paints in all mediums; this is a demonstration that will be restricted to pastel painting.

Ruby gave a live demonstration and critiques to the RAS workshop artists at a Sunday study day. This was both fun and illuminating for all who attended.

Why not give it a go and see if you can become a practicing artist, (of course we all practice all the time!) it is a great creative activity



PAST LECTURES:

Thursday 13th October - Rosalind Whyte lectured on

A HIGHLAND FLING – EIGHTEENTH CENTURY TO TWENTIETH CENTURY SCOTTISH ART .

Rosalind Whyte confessed she had selected an enormous subject for this talk, but she skillfully split it into four parts and through a myriad of facts steered a clear route.

Commencing with 18th & 19th-century painters, she focused on Alex Naismyth (1758-1840), Sir Henry Raeburn (1756-1823), Allan Ramsey (1713-1784) and Sir David Wilkie (1785-1841).

Naismyth's work was emblematic of the Scottish Enlightenment, featuring landscapes of Edinburgh then spreading from the Old Town to the New, and two portraits of his friend the poet Robert Burns.

Allan Ramsey studied in London and Rome, was painter to George III and operated in intellectual and scientific circles including David Hume and Jean-Jacques Rousseau.

Raeburn was the first to make a living from Scottish portraiture, including the well-known '*Reverend Walker skating on Duddington Loch*' in 1795.

Wilkie celebrated contemporary culture in his work, his paintings such as *Pitlessie Fair* in 1804 clearly influenced by the genre paintings with ordinary people and huge skies characteristic of Dutch Art.

The talk moved on to the 'Glasgow Boys', who reacted against overblown romantic landscapes with realistic depictions of commonplace subjects, such as the *Cabbage Garden* of Arthur Melville (1858-1904) and *The Highland Funeral* of Sir James Guthrie. Examples such as *The Vegetable Stall* of William York McGregor (1855-1923) showed everyday vegetables and clothing in a cold, unsentimental light.

Later, as Japanese culture became fashionable the era of the ('Mikado') richly decorative style emerged a fusion between oriental and domestic landscapes.

The well-known figure of Charles Rennie Mackintosh (1868-1928) followed, along with Margot McDonald. There was symbolism and allegory worthy of Beardsley, the designs for the Glasgow School of Art, and interior designs strongly pointing to the later fashion for Art Deco.

Finally we reached Scottish Colourists, exemplified by *The Black Bottle* of Samuel Peploe (1871-1935) with clear stylistic references to Manet. Following World War One, flat, geometric designs with acidic colours and sharp delineation dominated, exemplified by *On the beach at Tangier* of John Duncan Fergusson (1874-1961) as well as *Dieppe Fireworks* (1905) strongly reminiscent of Whistler.

This was a compelling and knowledgeable account of a large and varied subject, with not a Stag at Bay nor a Stormy Crag at Midnight in sight. I wholly agreed with the online comment of Simone Bloom; 'Brilliant paintings which pointed the way to greater innovation'.

Edward Cross

Thursday 10th November - Stella Grace Lyons lectured on

PLEASURE, SIN and MEN with FISH HEADS.

THE FANTASTICAL WORKS of HIERONYMUS BOSCH.

Visiting the Hieronymous Bosch Museum in Den Bosch in the Netherlands five years ago, I was surprised to find that he had worked in the 15th and 16th centuries. I had assumed him to have been much more modern.

Stella Grace Lyons referred to this apparently common misconception in her very interesting and well-illustrated talk.

His style is well-known; a plethora of fantastical beasts, huge, weird edifices akin to nightmarish laboratory kit, sinners indulging in self-indulgent wickedness and suffering the torments in grotesque visions of Hell.

She pointed out that although Bosch apparently occupies the position of an outsider and marginal figure at odds with artistic norms, and despite theories of use of hallucinogenic substances (such as bread with the wrong sort of mould), there is simply no evidence Bosch was anything other than a successful painter, of independent means following a wealthy marriage and who realized in graphic form the widespread normative Catholic beliefs of his place and time.

In the wake of the Black Death, folk were deeply conscious of the lurking presence of death and contemporary philosophical trends invited appreciation that all people had the opportunity to make moral choices in their lives and avoid the awful prospect of hell which, according to current doctrine, was the fate of nearly all; only 2 in 30,000 were said to be saved.

Demons were thought to be active in human affairs.

Born in 1550 with the surname Van Aachen, he adopted Bosch to reflect his home town as a way of advertising his place of business. His style appears to have been of his own creation, with no known influences.

Stella illustrated her talk with references to well-known works; The Garden of Earthly Delights, for example, a triptych with vivid imagery by way of didactic warnings; Adam

and Eve losing innocence surrounded by fantastic wild animals in a world of 'eat or be eaten'.

Humanity shown to be different from animals in having a capability to relate to God. The panel showing Hell displays torture, mutilation, physical pain and psychological suffering as the consequences of leisure pursuits, such as gambling and (worryingly) music-making

By 1500 Bosch held an international reputation with clients including royalty. His work was widely copied and forged, and formed an influence on later artists such as Breughel the Elder, born 10 years after Bosch died.

Although only some 20 genuine drawings survive, his work became widely known in the mid-nineteenth century and formed an influence on surrealists; Dali, Magritte and Ernst as well as later film-makers; Del Toro, and George Lucas, as well as fantasy computer games. Bosch was truly ahead of his time.

Edward Cross

WORKSHOP REPORT 2022

The workshop has been meeting in the Radlett Village Institute on Thursday afternoons now since September 2021

We are a lively, keen and enthusiastic group of artistic people of all abilities who come along and spend 2hrs or longer painting, drawing, collage work etc mixed with chat and good humour.

If you are are interested you are most welcome to come along. We meet from 1.00 / 1.30 until 3.30 The cost is £5 and you do have to be a RAS member to come along.

In October we welcomed Ruby Lewis for a very successful study day using pastels - it was interesting to see how differently we each interpreted the same subject on paper!! It was a fun day enjoyed by all.

This term finishes on Thursday December 15th and will recommence on January 5th and go on until Easter.

We were hoping to have a live model for an afternoon session on portraiture before Xmas, but the model is away on holiday until December so we look forward to welcoming him in the New Year instead.

However we do have the Xmas lunch at Porters Park Golf club to look forward to, on Wednesday December 7th which should be a most enjoyable, social occasion.

Best wishes

Gill Cooper

VISITS AND HOLIDAY

As Our Chairman, Adam, has noted in his report that sadly nobody has come forward to run either our visits or our holiday next year.

Trips – Your committee is looking into possible companies or groups that might arrange trips for us, or whose trips we can join.

We would still need someone to coordinate with the company, not an arduous job for a kindly volunteer.

There is another possible holiday option. It is very different from previous holidays and you will hear more about it in the future.

However, here is food for thought

There is an organisation called Holiday Fellowship who runs mainly walking holidays but it also has some art holidays as well.

We are looking at a 'Rambles with a Sketchbook holiday' (no more than 2 miles walk a day). The advantage is that non painters can also come and walk if they want, or just enjoy the area. HF has good, reliable hotels (not luxurious), and they provide full board including a packed lunch.

We went on a similar holiday with HF this year. Edward walked and I painted.

It was wonderful.

Anna Cross

CHRISTMAS LUNCHEON – 7TH DECEMBER 2022

Dear Member

Here are details of this year's Christmas lunch. Considering the way that the cost of everything is going up at the moment, I hope you will agree with me that Gill Cooper has excelled herself by managing to offer us the lunch under £40.00 per person.

When returning your completed forms, please could you send them to:

mrsgillcooper@icloud.com

If you press 'reply' on this email it will go to the general RAS mailbox, not to Gill.

Thank you and we look forward to seeing you on 7th December.

Anna

CHRISTMAS LUNCH : 7^H DECEMBER 2022 (12.30pm for 1.00pm)
PORTERS PARK GOLF CLUB, SHENLEY HILL, RADLETT WD7 7AZ
Cost: per person £3900. Wine included. Waitress service

Includes a welcome glass of wine or Fruit Punch on arrival.

I/We would like.....ticket(s) for the above plusguest(s)

I/We enclose cheque for payable to Radlett Art Society.

Have paid a Direct Bank Transfer for to Radlett Art Society

Name(s).....

We will try to accommodate friends who wish to sit together

Please state name(s) of all guest(s) & menu choices - mains and desserts

Name(s).....

Name(s):

A bottle of Red Wine and a Bottle of White Wine will be on each table

MENU: Main meal choices:

1). Braised Corn Fed Chicken with Mushroom Sauce.....

2) Grilled Sea Bass with Dill and White Wine Sauce.....

3) Forest Mushroom Stroganoff with Vegetable Rice.....

All served with Seasonal Vegetables and Hassel Back Potatoes

Dessert choices:

1a) Vanilla Pannacotta with Butterscotch Sauce

2a) Dark Chocolate Mousse

3a) Fresh Fruit Salad..... Coffee, tea and mints

Please let us know if you have any specific dietary needs

**RECEIPT WILL BE BY EMAIL ONLY. IF YOU HAVE NO EMAIL ADDRESS,
PLEASE SUPPLY STAMPED-ADDRESSED ENVELOPE**

Payment Methods

**Either:- THE ABOVE BOOKING FORM & YOUR CHEQUE SHOULD BE SENT
BY POST TO**

MRS GILLIAN COOPER, 4 Ridge Lane, Watford. WD17 4TD

or DIRECT BANK TRANSFER TO

Radlett Art Society

Nat West Account 50902571

Sort Code 60-17-14

Reference Your Name/Xmas

**AND EMAIL YOUR COMPLETED BOOKING FORM AND CONFIRMATION
THAT YOU HAVE PAID TO:**

-mrsgillcooper@icloud.com

Tel No 01923 226745

NOT LATER THAN MONDAY 28th NOVEMBER 2022,