



Radlett Art Society
<http://www.radlett-art-society.co.uk>

Dear Member,

Our Autumn lecture programme opened very successfully in September with a well-attended and appreciative audience for our lecturer Martin Heard. His illustrations and analyses of Toulouse Lautrec and 'Bohemian' Paris showed an in-depth view of a city, lively and entertaining but also with a decadent and sad flip side. It was an interesting and absorbing evening.



In contrast October's lecture depicted the 'Grande Dame' of the best of English theatre. Ellen Terry was a fascinating character and a full report of this talk by Frances Hughes is on page 2, thanks to Muriel Beaver.

Sadly, our visit to Snowhill Manor was cancelled but Osterley Park went ahead and was enjoyed by our visitors on a pleasant and mild autumn Sunday. A full programme of visits is planned for next year, see our calendar for 2018 which, we hope will interest and encourage many of you to join us.

This year's **Christmas Festive Supper** will be held at Porters Park Golf Club on Wednesday 6th December, cost per person £33.00 We look forward to a happy evening preceded with a welcoming glass of wine or juice at 7.00pm Application forms with full details of menus are enclosed. Please apply to Gayna Lawton with an SAE.

2018 SUBSCRIPTIONS

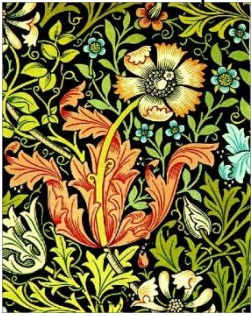
May we remind you that our annual subscription is due on 1st January It is still @ £26 per member. If you do not already have a standing order mandate, please send your cheque with a SAE to:
Mrs Myrna Sayers at the address shown on our membership form.

The Committee and I wish you all an enjoyable Christmas break and a very Happy New Year. We hope to meet you at our future events. **Garry Hersh**

FUTURE LECTURES at the Radlett Centre

THE ARTS AND CRAFTS OF WILLIAM MORRIS & HIS CIRCLE

Lecturer: Lt. Col. Dick Bolton



WILLIAM MORRIS (1834-1896) born in the second half of the **Victorian** age exerted a powerful influence on the development of art and design that extended well into the twentieth century. Mainly known as a designer and manufacturer of furniture, stained glass, wall-paper and tapestries, he was also an accomplished weaver.

He was an active Socialist, a social reformer and pioneering conservationist who also enjoyed much success as a poet and novelist. A complex man and a fascinating subject for our first lecture of 2018

Thursday 22nd February 7.30 for 8pm Members Free- Non Members - £ 10

PAST LECTURES

Tuesday 3rd October 2017 Frances Hughes lectured on ***ELLEN TERRY and the AESTHETES***

Frances Hughes entertained us with an unusual lecture. Her subject, Ellen Terry (1847-1928) had a remarkable life, which led to her mixing with the great artists and writers of her day. She had had no formal education, although, as the daughter of actors, knew the works of Shakespeare from an early age and made her acting debut as a small girl.

The artist, George Frederick Watts, captivated by her beauty, married her when he was 46 and she was 16. He loved painting her portrait, but they only remained together for 10 months. However, the liaison had enabled her to mix with such notables as Disraeli, Gladstone, Browning, Tennyson and Julia Margaret Cameron. She also developed a taste for elegant surroundings.

She and the architect/designer, Edward William Godwin, had a long affair which produced two children, Edith Craig and Edward Gordon Craig. They were given this surname to disguise their illegitimacy. Edith became an actress, director, costume designer and suffragist. Gordon became a famous actor, artist, director and stage designer. The family settled in Harpenden.

After six years, Ellen returned to the stage, married twice more, played as leading lady to Sir Henry Irving (with whom she lived for some years) and came into contact with playwrights, Charles Reade, Oscar Wilde and George Bernard Shaw and Gilbert and Sullivan. She also knew John Ruskin, Edward Burne Jones and other Pre-Raphaelite artists, who painted scenery for her plays. There is a famous Sargent portrait of her as Lady Macbeth. This was a delightful introduction to the social setting in which Ellen Terry, the superstar of her era, inspired. lived and worked

Muriel Beaver.

FUTURE VISIT - 18 March 2018 - Blenheim Palace



Details and booking form available in next Newsletter February 2018

PAST VISITS

Short Break in Wales - 10th to 12th September

On Sunday 10th September, 26 of us set off for a short trip to Wales, staying at the Angel Hotel in Cardiff. Our first stop was the National Museum housing one of Europe's finest art collections. This major gallery has over five hundred years of magnificent paintings, drawings, sculpture, silver and ceramics from Wales and across the world, including one of Europe's best collections of Impressionist art including works by Renoir, Monet and Van Gogh. There was a bonus for some people as the Tour of Britain Cycle race finished in Cardiff on the Sunday and some people went to see the end of the race. The hotel was well located, just a short walk from Cardiff Castle and the main shopping centre.

The next day started with our visit to Cardiff Castle. Starting as a Roman fort from about 50 AD this was built on and extended over the following centuries. There was a Norman keep, the top of which gave good views over the city with the thick outer walls of the castle used as an air raid shelter during World War II. The key part of the visit was to see the magnificently decorated private apartments designed by the architect William Burges in the late 19th century. In the afternoon we went on to Castell Coch, also designed by William Burges though not as beautiful as the Castle.

On Tuesday after checking out, we went to Chepstow to see the small Museum; some also went on to see the interesting castle in this border town. On our return journey back to Radlett, we visited Cheltenham and The Wilson Gallery (formally the Cheltenham Art Museum). There were a wide range of exhibits including items from the Arts & Crafts movement as well as some Turner paintings and sculpture by Rodin. It was a most enjoyable visit and we are already looking forward to the 2018 short visit to Yorkshire.

Gary Harding

PAST VISITS continued

Trip to Osterley House - Sunday 15th October

We started late (my fault!) under cloudy skies and with only 13 people. When we arrived at Osterley the sun had come out and we had time to grab lunch before entry to the house. Our visit began with a very interesting talk by one of the guides on the history of the house. Originally built before 1576 for Sir Thomas Gresham, Osterley Park was bought by the banker Francis Child in 1711 and remodelled for his grandson Robert in 1763-80 by Robert Adam with much of his work still in place today. Its history included two elopements, a chase by a father to Gretna Green and a disinheritance! After World War II, the house and park were passed to the National Trust via the V&A. We visited a number of rooms, including the long gallery with many impressive paintings, a beautiful (with)drawing room with pink tapestry wall coverings and an Etruscan dressing room with motifs from Greek pottery adorning the walls. Then down to the basement and the kitchen, pantry and the beer and wine cellars. There was also a small exhibition about Robert Adam with information about the craftsmen who worked on the furniture, textiles and stucco. After finishing our tour of the house, it was out to a warm and sunny garden full of plants and trees with lovely autumn colours. Everyone enjoyed the trip and it was only a pity that so few went.

Gary Harding

PAINTERS WORKSHOP

It was pleasing and encouraging to see the full and varied display of paintings by our Workshop members during October at the Radlett Centre.

Thanks to all those who exhibited and to those who gave willing help to mount the work, a grand effort

Next term's Thursday afternoon sessions start on Feb. 15th.

I hope to meet you all then, after a happy Christmas break.

Carmen

