



Radlett Art Society

Dear Member,

It's at this time of the year when we look back on another very busy year for the Society. Our activities have included a very successful Summer Exhibition in July; many interesting lectures and speakers throughout the year; and the various excursions - including Blenheim Palace in March and the Ashmolean Museum in Oxford in October. all well supported by you, the Membership.

Special thanks must go to Gary Harding for organizing, amongst other things, the 3-day trip to Yorkshire. From the reports received those of you who went had a wonderful time and thought the trip very well researched.

Next year we are planning a trip to Devon in 2019. We hope this will receive the same support.

My sincere thanks must go to the members of the Committee for all their hard work, and special thanks must go to you, the members, for your loyal support over the past 12 months.

May I take this opportunity to wish you all a very Happy Christmas and an equally good New Year. I look forward to seeing you at our forthcoming lectures and excursions, including the holiday in Devon, in 2019.

Our annual exhibition next year will be held in a new location – the old Barn attached to Battlers Green House opposite Battlers Green Farm on 7th – 10th September 2019. More information will be available nearer the time.

Rob Reith

REMINDER

Our **annual subscription £30 per person** is due on **1st January**. As already explained in our previous newsletter (No: 230) it has been increased by £4.

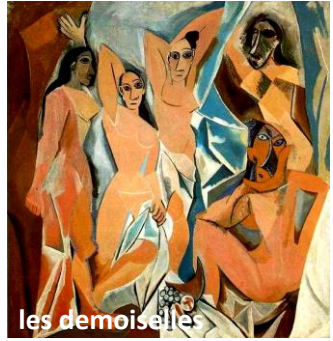
Members who pay by Standing Order – please use the attached form to send the amended mandate to your Bank. For alternative **payment by Cheque** - send with an **SAE** to **Mrs Myrna Sayers, Membership Secretary**.

FUTURE LECTURES at the RADLETT CENTRE in 2019

THE YOUNG PICASSO-what really happened at the BATEAU-LAVOIR

Lecturer: HILARY GUISE MA Fine Art

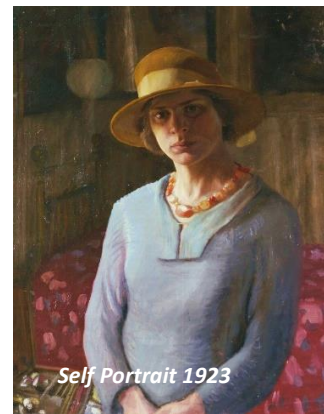
This ramshackle tenement in **Paris**, was inhabited by Catalan artists and French poets. **Picasso** lived here from 1904 to 1912. His work developed from the **Rose Period**, upbeat and optimistic, into his **African-influenced Period** on to **Analytic Cubism**, amply illustrating how his ideas constantly evolved. He was also a favourite of the American collector, **Gertrude Stein** who became his principal patron. His drawings and paintings were often exhibited at her **Salon in Paris** in those early important years.



Thursday 14th February 7.30 for 8pm - Members Free - Non-Members £10

THE FIRST MRS STANLEY SPENCER

Lecturer: ALAN READ MA MITG



Hilda Anne Carline (1889 -1950) studied at the **Slade School of Art** and had a promising early start with her works exhibited at the **London Group**, **Royal Academy** and the **New English Art Club**. Marriage to Stanley Spencer in 1925, gave her little opportunity to continue painting when most of her time was taken up in household duties as wife and mother with two daughters. It was only when their marriage collapsed and they finally separated, she was able to start again. Alan Read traces her career from early works to her later more mature paintings. and discusses the unique talents of this remarkable woman who captivated young Stanley Spencer.

Tuesday 12th March 12 noon for 1pm

Free to all

FROM COROT TO MONET Lecturer: **ROSALIND WHYTE BA(Hons) MA**

The French artist **Jean Baptiste-Camille Corot (1796-1875)** was pivotal in the development of open air landscape painting, Studio painted landscapes neo-classicist, idealized and imagined were one major convention. Realistic work faithful to the topography was another. He and other like-minded artists began to explore new techniques, which reveal in their works, the tangible influences evident in the paintings of the **Impressionist** movement later in the 19th century.

Thursday 18th April

7.30 for 8pm

Members free

Non-Members £10



PAST LECTURES

Thursday 6th September - **Frank Woodgate** lectured on ***FAUVE and FRENCH IMPRESSIONISM***

Frank gave us a truly comprehensive summary of this short-lived movement who exhibited in three major exhibitions: **Salon d'Automne 1905; Salon des Indépendants 1906** and **Salon d'Automne 1906**. Their main difference from previous artists, was their use of very vibrant colours, although they were heavily influenced by Cezanne, Gauguin and Van Gogh. Frank explained that they used a technique of contrasting a primary colour against a mixture of two colours from the opposite side of the colour wheel. They also paid heed to Gauguin's words: "How do you see these trees? They are yellow. So, put in **yellow**; this shadow, rather blue, paint it with pure **ultramarine**; these red leaves? Put in **vermilion**." Some of the best known members were Matisse, Derain, **de Vlaminck** **Dufy**, **van Dongen** and **Braque**. Their work influenced other avant-garde movements, such as **Expressionism**. **Muriel Beaver**

Thursday 4th October - **Linda Collins** lectured on ***THOSE CRAZY YEARS: LIFE and ART in PARIS during the JAZZ AGE 1920s–30ss***

In one of the liveliest lectures we have had, Linda swept through the period of excess following the First World War. The French had been invaded and occupied so often, that they were resolved to enjoy every second of freedom, before the next time. She explained that, in order to understand the art of the period, one must know about the social milieu, what was happening in all the arts – music, writing, design and architecture – which all influenced each other. We learnt about the black American soldiers, who carried their brass instruments into the trenches and brought them, in their battered state to Paris and introduced jazz; **Coco Chanel** and her No. 5; **Nancy Cunard** and her black magician lover; **Colette**; **Josephine Baker** and many more iconic personalities. The works of **Picasso**, **Dali**, **Miro**, **Chagall**, **Brancusi** and their fellow artists at the time, all came out of this fervour of activity. Of course, the Second World War put an end to it all and many of the artists in all genres, went to the United States and their works were adapted to their new environment. This was an exciting evening as we relived the Jazz Age in Paris. **Muriel Beaver**

In October, **RAS** members of the weekly **Painters' Workshop** mounted an exhibition of their paintings. Congratulations to each artist on interesting results of varied ideas and skilful ways of painting and those who worked hard at putting it all up and taking it down. The next Exhibition now on for November is from **RAS** members of the **Elstree Circle** showing some very good works of a high standard. Well done to all ! **Carmen**

FUTURE VISITS in 2019 24th March – Windsor Castle

Built by **William the Conqueror** after the Norman Conquest, **Windsor Castle** is a royal Residence, and favourite weekend home of the **Queen**. The **Semi-State Rooms** are among the most richly decorated interiors in the Castle and used by the Queen for official entertaining. The State Apartments were where Charles II set out to rival the achievements of his cousin Louis XIV at Versailles. From the 17th century many of the interiors have changed significantly. Painted ceilings by **Antonio Verrio**, Carvings by **Grinling Gibbons**, paintings by **Holbein, Van Dyck** and **Rubens** create a set of extravagant Baroque interiors still admired today.



Estimated cost - £40

Depart Radlett 10.00 – Arrive Windsor 11.00

–

Depart Windsor 16.30 - Arrive Radlett 17.30

28th April – Audley End Essex

Audley End House is renowned as one of the finest Jacobean houses in England. An impressive interior contains magnificent state apartments amongst other architectural highlights also a huge picture collection displaying paintings by **Canaletto, Jan Asselin, Jan Brueghel the Younger** and **Giovanni Battista Cipriani**. Outside are the Stables and the Service Wing (where the Servants lived), the Dairy and Laundry Room – all fascinating to see how the great house functioned in earlier days. Gardens originally designed by Capability Brown are an extra attraction not to be missed.

Estimated cost - £35

Depart Radlett 10.00 - Arrive Audley End 11.45

Depart Audley End 16.30 Arrive Radlett 18.15

PAST VISIT- 21ST October – Ashmolean Museum, Oxford

A bright sunny Sunday morning, late in October, saw 21 members boarding a coach bound for Oxford, and the **Ashmolean Museum** in particular. And what a treat we were in for. Such a wonderful miscellany of artifacts assailed our eyes, it was difficult to choose what to see first. From **European Art 1800** to the **Present Day**, to **West meets East**, to the **Ancient World**, and to **Exploring the Past** – each section having so much to grab our attention! To name but a few – **1664 Oxford coin**, a **Mummy of Meresamun 830-715BC**, an **Octopus Jar 1450-1400BC**, a camel of the **Tang Dynasty (AD 618 -906)**

In addition to visiting the Museum, some members took advantage of being in Oxford and went to the **Botanical Gardens**, whilst others visited the **Covered Market** and the nearby shops, which were a further temptation!

All in all a marvelous outing!

Charmian Reith